



# HIGH DIFFUSE TROFFER

DLT SERIES



Project: \_\_\_\_\_  
 Date: \_\_\_\_\_  
 Comments: \_\_\_\_\_  
 \_\_\_\_\_  
 \_\_\_\_\_

## Product Benefits:

- The perfect balance between lighting quality and return on investment.
  - Leading system efficacy.
- Zero maintenance.
- Architectural grade finish.
- Uniform imaging.
- Developed & patented in the USA. Manufactured & assembled in the USA of U.S. and imported parts.
- Custom sizes & finishes available.

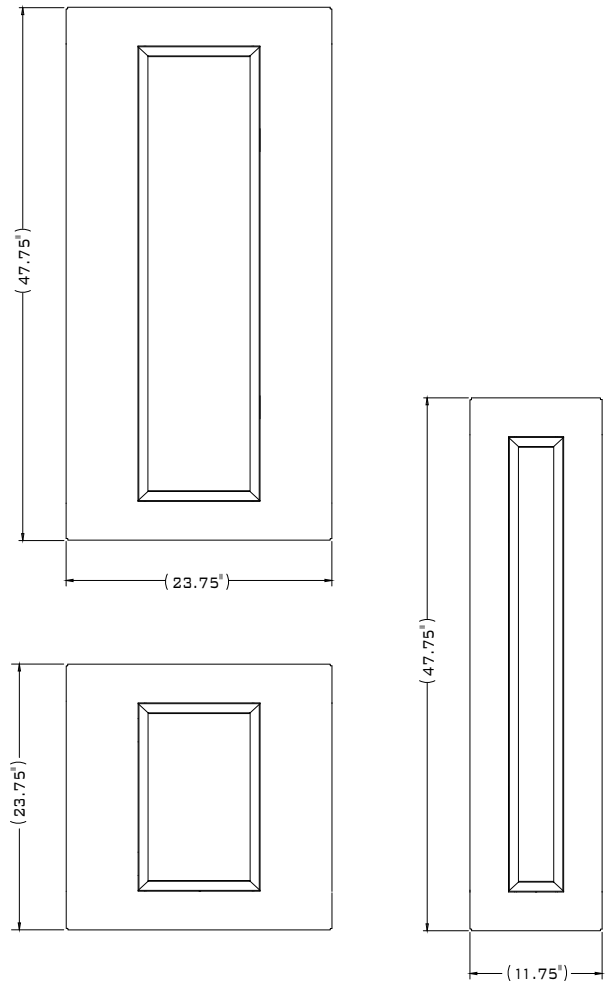
## Performance & Specifications:

Color Temperature ..... 4000K  
 CRI ..... 84 min  
 Input Voltage ..... 120-277, 347 & 480 VAC  
 Warranty ..... 5 Years  
 Projected L70\* ..... min 200,000 hrs  
 Dimming ..... 0-10 Volts

\*L70 TM-21 projection calculated at 25 °C.

| Product | Height (in.) | Input Power (W) | Max Lumens (nominal) | Efficacy |
|---------|--------------|-----------------|----------------------|----------|
| DLT14   | 2.75         | 28              | 3300                 | 117      |
|         |              | 20              | 2200                 | 107      |
| DLT22   |              | 29              | 3300                 | 114      |
|         |              | 20              | 2200                 | 117      |
| DLT24   |              | 38              | 5000                 | 126      |
|         |              | 33              | 4000                 | 129      |
|         | 28           | 3300            | 131                  |          |

## Measurements:



## Additional Ordering Options:

- Integrated Occupancy and Daylight & Harvesting Sensor - Field Programmable
- Battery backup
- Air Handling

## Qualifications:





# HIGH DIFFUSE TROFFER

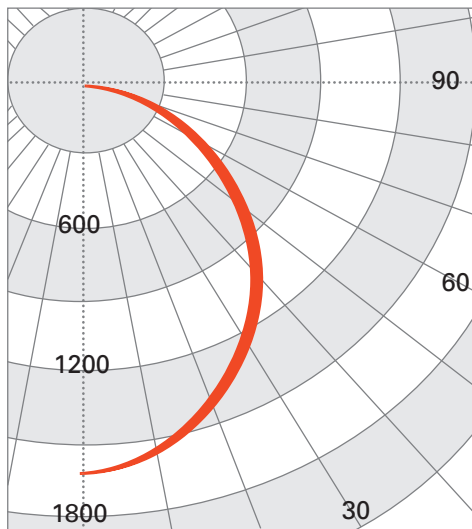
DLT SERIES

## DLT24-4000L-40K Photometric Details (representative)

### Intensity Summary (cd)

| Gamma | C-Plane |       |      |       |      | Flux (lm) |
|-------|---------|-------|------|-------|------|-----------|
|       | C0      | C22.5 | C45  | C67.5 | C90  |           |
| 0.0   | 1676    | 1676  | 1676 | 1676  | 1676 |           |
| 5.0   | 1664    | 1664  | 1664 | 1664  | 1664 | 152       |
| 10.0  | 1630    | 1631  | 1632 | 1633  | 1633 |           |
| 15.0  | 1576    | 1577  | 1580 | 1582  | 1582 | 429       |
| 20.0  | 1504    | 1505  | 1509 | 1513  | 1514 |           |
| 25.0  | 1415    | 1417  | 1423 | 1428  | 1431 | 632       |
| 30.0  | 1314    | 1316  | 1323 | 1330  | 1333 |           |
| 35.0  | 1202    | 1205  | 1214 | 1222  | 1226 | 735       |
| 40.0  | 1083    | 1087  | 1097 | 1106  | 1110 |           |
| 45.0  | 961     | 966   | 976  | 986   | 990  | 730       |
| 50.0  | 838     | 842   | 852  | 863   | 867  |           |
| 55.0  | 714     | 718   | 728  | 738   | 742  | 631       |
| 60.0  | 591     | 595   | 604  | 613   | 616  |           |
| 65.0  | 469     | 473   | 481  | 488   | 491  | 461       |
| 70.0  | 349     | 352   | 359  | 365   | 367  |           |
| 75.0  | 233     | 235   | 240  | 245   | 246  | 247       |
| 80.0  | 126     | 127   | 131  | 133   | 134  |           |
| 85.0  | 41      | 41    | 42   | 43    | 43   | 53        |
| 90.0  | 0       | 0     | 0    | 0     | 0    |           |

### Two Plane Symmetry



### Zonal Flux and Percentages

| Zone   | Flux (lm) | % Lamp | % Luminaire |
|--------|-----------|--------|-------------|
| 0-30   | 1258      | N/A    | 29.9        |
| 0-40   | 2016      | N/A    | 48.0        |
| 0-60   | 3420      | N/A    | 81.3        |
| 0-90   | 4204      | N/A    | 100.0       |
| 40-90  | 2188      | N/A    | 52.0        |
| 60-90  | 784       | N/A    | 18.7        |
| 90-180 | 0         | N/A    | 0.0         |
| 0-180  | 4204      | N/A    | 100.0       |

### Coefficients of Utilization - Zonal Cavity Method Effective Floor Cavity Reflectance 0.20

| RC | 70  |     |     |     |     |     |     |     |     |     | 50  |     |     |     |     |     |     |     |     |     | 30  |     |     |     |     |     |     |     |     |     | 10 |  |  |  |  |  |  |  |  |  | 0 |  |
|----|-----|-----|-----|-----|-----|-----|-----|-----|-----|-----|-----|-----|-----|-----|-----|-----|-----|-----|-----|-----|-----|-----|-----|-----|-----|-----|-----|-----|-----|-----|----|--|--|--|--|--|--|--|--|--|---|--|
|    | 70  | 50  | 30  | 10  | 70  | 50  | 30  | 10  | 70  | 50  | 30  | 10  | 70  | 50  | 30  | 10  | 70  | 50  | 30  | 10  | 70  | 50  | 30  | 10  | 70  | 50  | 30  | 10  | 0   | 0   |    |  |  |  |  |  |  |  |  |  |   |  |
| 0  | 119 | 119 | 119 | 119 | 116 | 116 | 116 | 116 | 111 | 111 | 111 | 106 | 106 | 106 | 102 | 102 | 102 | 100 | 100 | 100 | 100 | 100 | 100 | 100 | 100 | 100 | 100 | 100 | 100 | 100 |    |  |  |  |  |  |  |  |  |  |   |  |
| 1  | 109 | 105 | 101 | 97  | 107 | 102 | 99  | 95  | 98  | 95  | 92  | 94  | 92  | 90  | 91  | 89  | 87  | 85  | 85  | 85  | 85  | 85  | 85  | 85  | 85  | 85  | 85  | 85  | 85  | 85  |    |  |  |  |  |  |  |  |  |  |   |  |
| 2  | 100 | 92  | 85  | 80  | 97  | 90  | 84  | 79  | 86  | 81  | 77  | 83  | 79  | 75  | 80  | 77  | 73  | 71  | 71  | 71  | 71  | 71  | 71  | 71  | 71  | 71  | 71  | 71  | 71  | 71  |    |  |  |  |  |  |  |  |  |  |   |  |
| 3  | 91  | 81  | 73  | 67  | 89  | 79  | 72  | 66  | 76  | 70  | 65  | 74  | 68  | 64  | 71  | 67  | 63  | 60  | 60  | 60  | 60  | 60  | 60  | 60  | 60  | 60  | 60  | 60  | 60  | 60  |    |  |  |  |  |  |  |  |  |  |   |  |
| 4  | 84  | 72  | 63  | 57  | 81  | 71  | 63  | 56  | 68  | 61  | 56  | 66  | 60  | 55  | 64  | 58  | 54  | 52  | 52  | 52  | 52  | 52  | 52  | 52  | 52  | 52  | 52  | 52  | 52  | 52  |    |  |  |  |  |  |  |  |  |  |   |  |
| 5  | 77  | 64  | 56  | 49  | 75  | 63  | 55  | 49  | 61  | 54  | 48  | 59  | 53  | 48  | 57  | 52  | 47  | 45  | 45  | 45  | 45  | 45  | 45  | 45  | 45  | 45  | 45  | 45  | 45  | 45  |    |  |  |  |  |  |  |  |  |  |   |  |
| 6  | 71  | 58  | 49  | 43  | 69  | 57  | 49  | 43  | 55  | 48  | 43  | 54  | 47  | 42  | 52  | 46  | 42  | 40  | 40  | 40  | 40  | 40  | 40  | 40  | 40  | 40  | 40  | 40  | 40  | 40  |    |  |  |  |  |  |  |  |  |  |   |  |
| 7  | 66  | 53  | 44  | 38  | 64  | 52  | 44  | 38  | 51  | 43  | 38  | 49  | 42  | 38  | 48  | 42  | 37  | 35  | 35  | 35  | 35  | 35  | 35  | 35  | 35  | 35  | 35  | 35  | 35  | 35  |    |  |  |  |  |  |  |  |  |  |   |  |
| 8  | 62  | 48  | 40  | 34  | 60  | 48  | 40  | 34  | 46  | 39  | 34  | 45  | 39  | 34  | 44  | 38  | 33  | 32  | 32  | 32  | 32  | 32  | 32  | 32  | 32  | 32  | 32  | 32  | 32  | 32  |    |  |  |  |  |  |  |  |  |  |   |  |
| 9  | 58  | 44  | 36  | 31  | 56  | 44  | 36  | 31  | 43  | 36  | 31  | 42  | 35  | 30  | 41  | 35  | 30  | 29  | 29  | 29  | 29  | 29  | 29  | 29  | 29  | 29  | 29  | 29  | 29  | 29  |    |  |  |  |  |  |  |  |  |  |   |  |
| 10 | 54  | 41  | 33  | 28  | 53  | 41  | 33  | 28  | 40  | 33  | 28  | 39  | 32  | 28  | 38  | 32  | 28  | 26  | 26  | 26  | 26  | 26  | 26  | 26  | 26  | 26  | 26  | 26  | 26  | 26  |    |  |  |  |  |  |  |  |  |  |   |  |



# HIGH DIFFUSE TROFFER

DLT SERIES

**MODERN APPEARANCE:** The DL series provides a fresh and refined look compared to older parabolic louver and prismatic lens fixtures.

**AIR HANDLING FIXTURES:** An optional frame configuration is available for existing fixtures that return air to the HVAC system.



Raffino can configure products to fit your customer's specific needs. Contact us for more details!



Search DLC QLP as "DLT24-5000L, DLT22-4000L, DLT24-3300L, DLT22-3300L, DLT22-2200L, DLT14-3300L or DLT14-2200L." Custom Lumen outputs achieved by in-line dimming satisfy DLC requirements and will be registered as the parent fixture.



STANDARD



AIR HANDLING

| Product Size | Lumen Output  | Color Temp.  | Battery & Transformers   | Frame Type   | Sensory Option   | Cord/Plug   |
|--------------|---|--|--|--|--|---|
| <b>DLT14</b> | 2200L 2200 Lumens<br>3300L-3300 Lumens                      | <b>35K-3500K</b><br><b>40K-4000K</b><br><b>50K-5000K</b> | <b>N</b> -None (standard)  | <b>S</b> -Standard Troffer<br><b>A</b> -Air Handling | <b>N</b> -None<br>Multiple Sensor Options are available.<br><b>See Indoor Sensing Solutions Spec Sheet</b> | <b>#P</b> -5-15 Plug (6-15 if HV option)<br><b>#W</b> -Whip (no plug)<br><br><b>#</b> = Cord length (6' standard, 8' & 10' available) |
| <b>DLT22</b> | 2200L 2200 Lumens<br>3300L-3300 Lumens                      |  | <b>B1</b> -Emergency Battery Pack 900 lms  |  |  |   |
| <b>DLT24</b> | 3300L-3300 Lumens<br>4000L-4000 Lumens<br>5000L-5000 Lumens |  | <b>B2</b> -Emergency Battery Pack 1300 lms<br><br><b>3</b> -347 V Transformer<br><b>4</b> -480 V Transformer |  |  |   |

**EXAMPLE ORDER:** DLT24-3300L-40K-N-S-N-6P